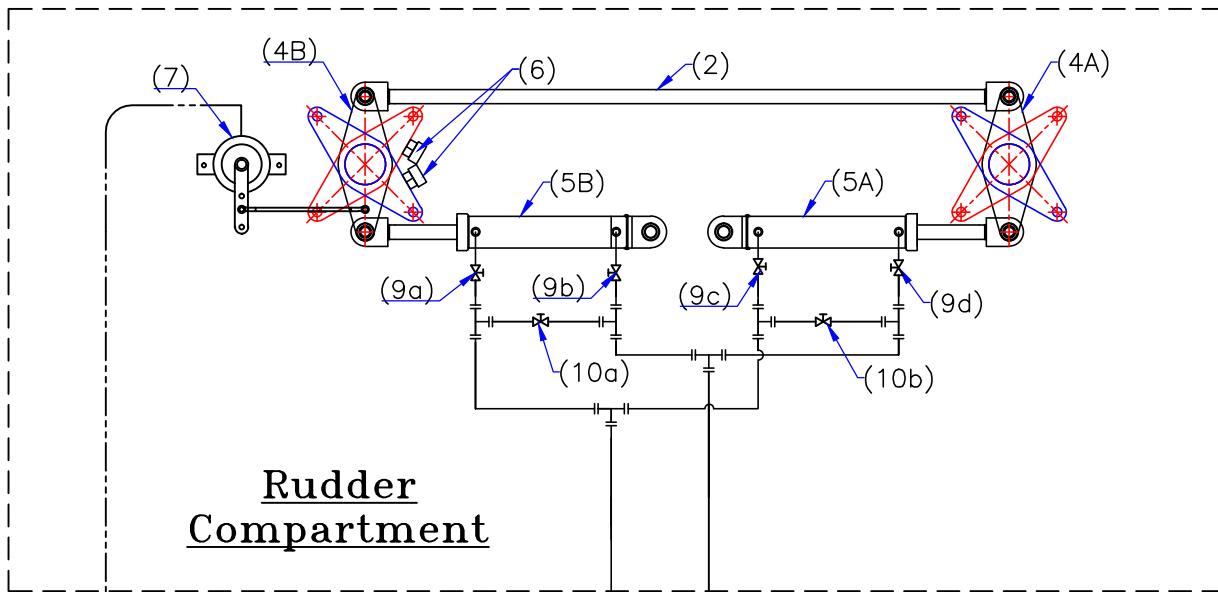
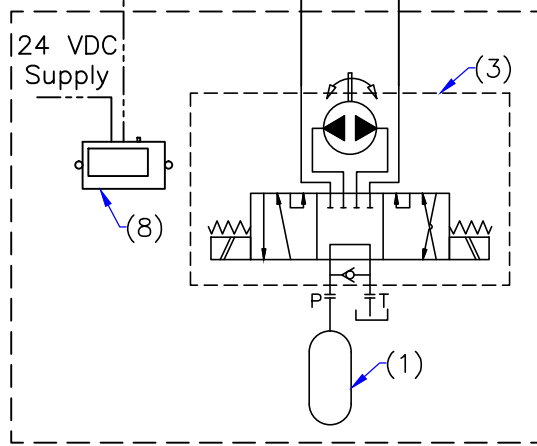


# Schematic Diagram of JumboZ-500 MANUAL STEERING



**Rudder Compartment**



**Wheel House**

10a,10b	By-Pass Valve
9a,9b,9c,9d	Isolation Valve
8	Rudder Angle Indicator
7	Rudder Angle Sensor
6	Mechanical Stopper (Customer Supply)
5a,5b	Hyd. Actuator
4a,4b	Tiller Arm
3.	Main Steering Unit
2.	Connection Rod (Customer Supply)
1.	Oil Reservoir
Sl.no	Description

**SPECIFICATIONS**

1. Tiller Radius : 300mm.
2. Pump Capacity:-  
Manual : 80CC/rev.
3. HYD.ACTUATOR:-  
Ram : 40 mm x 2  
Stroke : 440 mm.
4. PIPE :-  
OD : 16mm.  
ID : 12MM.
5. HOSE :-  
GRADE : R1  
I.D : 1/2"

ITEM	SCALE	MATERIAL	VIEW	DRAWN	CHECKED
/	NTS	/		JK	VUK
DESIGNATION			DWG NO	DATE	QTY
Schematic Diagram of JumboZ-500M			MHS-1074	10.12.2020	/
<b>MAC ♦ N ♦ HOM SYSTEMS</b> <b>KOCHI - 20</b>					